



Robik
moving the world

Electric movers

Robik

"Give me a lever ... and I shall move the world. "

Archimedes. 287 aC.

this is the principle that inspired us in the development of Robik system, a solution for lifting and towing high weights, applying the modern technology.

Our only merit we take is to have combine history of technology has handed down us, the know-how of current technology and the many requests that we have patiently collected. In fact in various industrial production sectors, where it's elevated the need to solve problems regarding handling of unconventional products and loads, often out of standard, in areas used for production processes.

Requirements that occur especially when the loads are high and voluminous and the material handling is done in very restricted areas, where the processes must also be fast and customized. These contexts require a flexible and modular solution, which, at the same time, is able to guarantee the safety of the operators. We have decided to take up this important challenge and respond with a lot of commitment and enthusiasm, creating a division dedicated exclusively to this project: SATES Electric Handling division, the protagonist of ideation and development of a new generation of electric movers, lifters, pushers and electric trailers, compact, handy and extremely powerful

Robik Q120 e Robik Q30.

The origin

Nowadays many companies, organized with the Manufacturing Engineering and Operation Management Division, are engaged in improving material handling processes and in reducing of the relative critical issues. In this context it finds application our electric mover **Robik**.

Robik imposes new standards and multiple strengths: on one side it boasts a compact structure with a special and captivating design, on the other it has exceptional lifting force from 3.000 to 12.000 kg.

Handy and Powerful

During loads positioning, **Robik** lifts and brings vertically the load into an ideal position to allow the maximum traction. In this way the load will be placed above, but set back from the front drive axle. Thanks to this principle, we have been able to reduce the total length of **Robik**, making it handy, with, at the same time, a great load capacity, improving driving stability, reducing the size and weight through the compensation with counterweights. Robik is also suitable as a shuttle/locomotive for towing trolleys.

Quality-sustainability

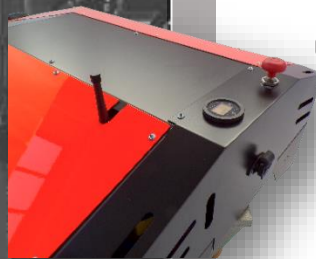
Robik products, CE certified, are characterized by advanced components and attention to design and details. Quality, safety and reliability are fundamental values for *Sates Electric Handling*.

Made in Italy

Study, design and development are carried out entirely in Italy, specifically in Padua, by a qualified and specialized team which ensures total control of process and industrialization of **Robik**. During the design phase, our team has considered all stresses and critical issues due to use in particularly harsh conditions. Special load and stress tests have been performed on the materials to prove their resistance and durability over the time. For this reason, in the development phase we included the best solutions of mechanical technology and modern electronic technology and used only high quality materials; thus leading to the creation of the two models **Robik Q30** and **Robik Q120**.

Sustainability

The suppliers have been scrupulously selected with the aim of ensuring the best reliability. These partners have been sought on the basis of some requirements deemed fundamental for a principle of sustainability, such as "made in italy" in order to bring value to the territory, within a radius of less than 100 km from our headquarters in order to reduce pollution, use of modern and quality production processes in order to reduce rejected parts.



Emergency stop device



Autec professional radio control



Steel chassis (stainless steel 316 only on request)



Lifting plate

Features

- ✓ 24V dc power supply
- ✓ CE certification
- ✓ Patent pending
- ✓ Steel chassis, polyhester powder painting
- ✓ Grey anthracite and orange coloured
- ✓ Radio control
- ✓ Maximun speed back and forth 3-4 km/h
- ✓ Towing and pushing on horizontal plane (with vertical load min 500 kg)
 - +/- 1200 kg 11768 N (Robik Q120) about 20 tons to 60 tons
 - +/- 490 kg 4805 N (Robik Q30) about 10 tons to 40 tons
- ***ATTENTION:** The towing capacity in ton can vary substantially from the nominal value reported here, depending on the type of soil on which the towing is carried out, on the type, number and condition of wheels fitted to the trailer, on the presence of any gradients and friction present and generated in the system.
- ✓ Lifting on horizontal plane
 - +/-12.000 kg (Robik Q120)
 - +/-3.000 kg (Robik Q30)
- ✓ Towing bracket on request
- ✓ External battery charger
- ✓ Weight 645 kg (Robik Q120) 350 kg (Robik Q30)
- ✓ Dimensions(LxWxH₁xH₂) H₁ and H₂ minimum/maximum height of loading platform
 - 1938x762x285x670 (Robik Q120)
 - 1529x710x226x522 (Robik Q30)



Application fields

- ✓ Loads non conventional on wheels
- ✓ Trailers, machinery and different wheeled
- ✓ Particular industrial processes
- ✓ Heavy industry
- ✓ Industrial automation processes
- ✓ Mechanical engineering
- ✓ Nautical shipbuilding industry
- ✓ Services at the sea
- ✓ Aerospace industry
- ✓ Automotive industry
- ✓ Railway industry
- ✓ Wind industry

Strengths

- ✓ Compact and robust
- ✓ Handy
- ✓ Powerful
- ✓ Safety
- ✓ Used in different landscape
- ✓ Suitable for tight spaces
- ✓ Maximation of security
- ✓ Efficiency material handling
- ✓ Cost reduction
- ✓ Maximation of investment
- ✓ High quality
- ✓ Radio control professional by Autec leader of wireless control devices
- ✓ Made in Italy
- ✓ Patent pending

Why choose Robik?

For tight spaces

Nowadays the sizes of the operating area are getting smaller, therefore it is essential to not waste spaces inside them.

Compact and efficient

It's in this context that **Robik** shows all its potential: thanks to its compactness it can also operate in narrow areas, guaranteeing maximum maneuverability and movement performance, greater efficiency and speed in handling even on long distances.

Indoor and outdoor use

Different equipment is available according to different kind of floors such as the common industrial concrete pavements as well as uneven asphalt, typical of the external areas. In this case is available a super elastic rubber.

Maximum flexibility

Furthermore, **Robik** has also been designed for a possible outdoor use in industrial areas or such as shipbuilding located close to the sea and subject to saline mists, or even for companies with processes highly corrosive agents. For these cases we have provided, on request, a special configuration: the use of steel 316 or other special treatments such as cathaphoresis with anchoring paint to guarantee quality over time.

To reduce costs

We designed and developed **Robik** with the idea of making costs efficiency, including maintenance costs reduction (- 70%). Maintenance is extremely reduced compared to other conventional machinery. In addition, construction improvements have been introduced to minimize investment costs.

Cost efficiency

Such as the choice to insert high quality batteries (Abt Power brand) with Deep Cycle GEL technology (hermetic), eliminating the related maintenance costs. Another advantage is the reduction of labour costs; in fact the particular mode and ease of driving allows maximum operational control for a single operator, without resorting to the help of other people for continuous checks on the maneuvers to be performed.

To the safety

We have done a lot for safety! The radio control technology confers a very important added value for companies, in addition to the significant increase in safety for operator in charge of using the machinery, but also for all the other operators involved in the same area processes.

Radio control

The availability of a greater visual field provides maximum control over the maneuvers, maintaining a safety detachment in the affected area. All **Robik** are equipped with safety devices such very powerful emergency brakes and the luminous and audible devices that warn the staff of the movement in progress.

To efficiency

Robik works efficiently especially by picking up and positioning the load with precision and velocity.

Easy driving

In order to be user friendly, an extremely ergonomic and functional radio control for driving has been developed, with the aim of coordinating at the same time the movement of the hand with the visual control of entire work area.

The radio control solution pilots every movement, ensuring maximum efficiency, working directly on the traction and using the same vertical load, with a center of gravity that falls within the maneuvering traction axis to obtain maximum response. In the same space we act in counter rotation with differential, obtaining a maximum operating effect, reducing maneuvering spaces by over 70%, a factor strongly determined in the areas where **Robik** is required.

For this particular technical development **Robik** is a patent pending product.

SATES
Electric Handling

SATES di Salvò Luca

Via dell'Artigianato, 36

35020 Casalsarugo (PD)

TEL. +39 049 643487 - SDI M5UXCR1

www.robik.it - sales@robik.it

